



**80%**  
Biocontent,  
Mineral &  
Recycled

## Premium

The Unrivalled Flooring Solution

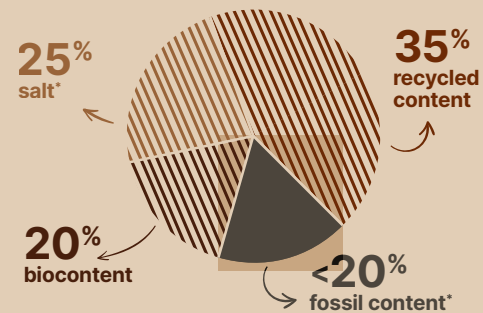
**Gerflor®**



# Premium in Sustainability

# 80%

Biocontent, Mineral & Recycled



Premium contains 20% crop residues from responsible sources. We recycle discarded soy waste from the animal feed industry.

The result: less fossil based material and less carbon.

## A low carbon solution



Thanks to its improved composition, Premium emits 29%\*\* less CO<sub>2</sub> than the average heterogeneous floorings.

**A good choice to decarbonise your projects.**

## 100 % recyclable



Premium range is compatible with Gerflor's **Second Life programme** that is available in selected countries.

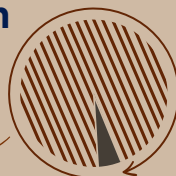
\* Vinyl is made of two main ingredients : ethylen and salt.  
\*\* Based on life cycle assessment certified by UL for an average heterogeneous product.

## To go a step forwards Premium Zero

### Towards a world with 0 fossil extraction

More than 95% of natural, recycled and bio-attributed content.

Available on demand.



With the urgency of climate change and the scarcity of natural resources, we have a responsibility to further reduce the environmental impact of our products.

Our R&D has taken another step forward by improving Premium: thanks to the addition of bio-sourced materials, the carbon footprint of the range has been reduced by 20% without compromising performance.

Together, let's build a more sustainable future, one step at a time.

**we care / we act**

# Premium in performances

35 years of satisfied customers



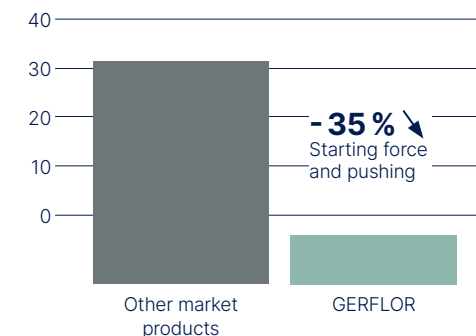
## Unrivalled durability

- High density pressed wearlayer
- Pressed under 800 tons
- Immutables designs

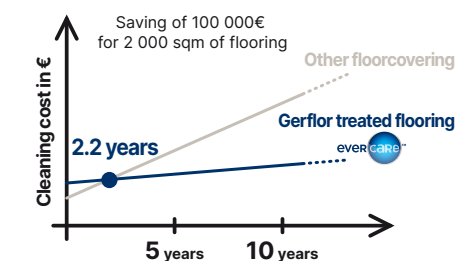


## High resistance to heavy loads

- Double reinforcement for excellent dimensional stability
- Easy rolling



## Lower maintenance costs



## Indoor air quality

- A+ / Floorscore / M1 certified
- Phthalate-free
- Anti-bacterial activity: ISO 22196





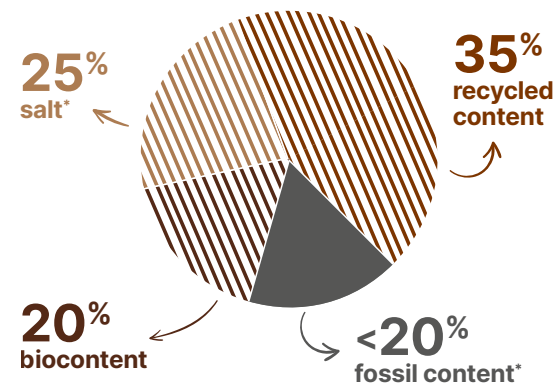
# New collection Premium

## More sustainable materials

# 80%

### Biocontent, Mineral & Recycled

Premium contains 29% crop residues from responsible sources. We recycle discarded soy waste from the animal feed industry. The result: less fossil based material and less carbon.



## Low carbon solution



Thanks to its improved composition, Premium emits 20%\*\* less CO<sub>2</sub> than the average heterogeneous floorings.

**A good choice to decarbonise your projects.**

## 100% recyclable



Premium range is compatible with **Gerflor's Second Life programme** that is available in selected countries.

\* Vinyl is made of two main ingredients : ethylen and salt.

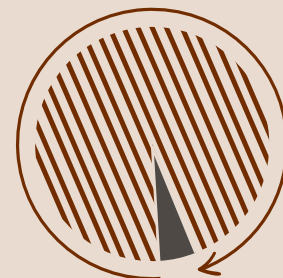
\*\* Based on life cycle assessment certified by UL for an average heterogeneous product.



## To go a step forwards Premium Zero

## Towards a world with 0 fossil extraction

**More than 95% of natural, recycled and bio-attributed content.**  
Available on demand.



## A range as powerful as ever

35 years of satisfied customers



“

*With 600 000 passengers per year, plus their luggage and carts, this floor covering offers the advantage of standing up to heavy traffic while remaining easy to maintain.*

**Pau-Pyrénées Airport, France**

*For 20 years, this mass-coloured surface has always been satisfactory. We've had no problem with tears, scratches or wheel marks.*

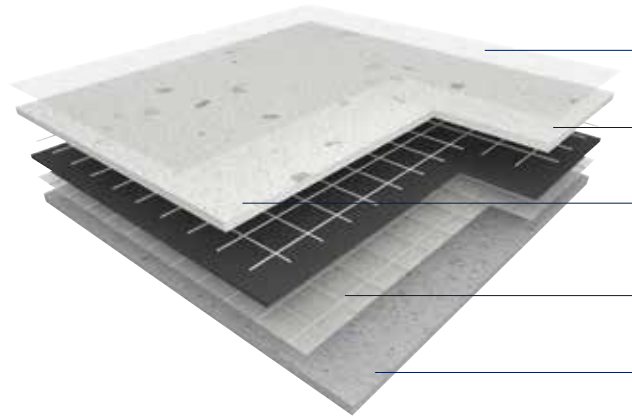
**Hospital in Lons-le-Saunier, France**

”



# A unique construction

## for unrivalled strength and durability



- Evercare™ surface treatment stain barrier, **easy maintenance** & hygiene
- High density **pressed wearlayer** pressed under 800 tons for an unrivalled durability
- Matt effect** for a modern look
- Double glass fiber grid** for the best dimensional stability (acoustic only)
- VHD foam** sound insulation (acoustic only)



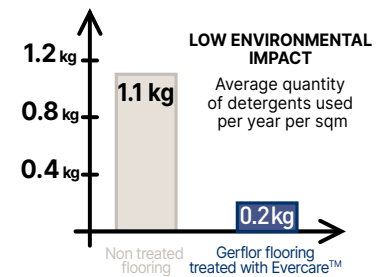
### High resistance to heavy loads

Tested with **TENTE** teams (specialists in wheels and castors, particularly in hospitals), Premium offers better rolling ease (dynamic indentation) than other products on the market.



### No metallization required

**= WATER & DETERGENT SAVINGS**  
**10x** fewer cleaning products are needed to maintain Gerflor floors compared to untreated floors



### Recognized Certifications

- ✓ **REACH\*** compliant raw materials and phthalate-free\*\*
- ✓ **Indoor air quality:** < 10µg certified by Floorscore (after 28 days)
- ✓ **Carbon impact less than 11 kg eq CO<sub>2</sub>/m<sup>2</sup>** (EPD available)
- ✓ **Certified ISO 21702:** Antiviral activity (Human Coronavirus)

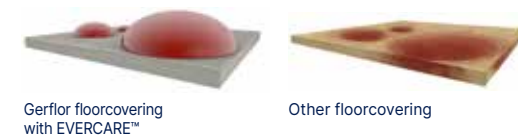
\* REACH: Regulation concerning the Registration, Evaluation, Authorisation and Restriction of Chemicals  
 \*\* Excluding recycled content



### Matte surface, easy to maintain

The patented EVERCARE™ technology ensures high stain resistance (Betadine, eosin, marker, etc.) as well as easy maintenance. This significantly reduces maintenance costs and decreases environmental impact.

Stain shield



### Stain test



### Extreme durability

100% pure homogeneous wearlayer for superior abrasion and traffic resistance as well as long lasting colors.

### 100% pure vinyl pressed wearlayer

#### Premium

High density pressed wearlayer



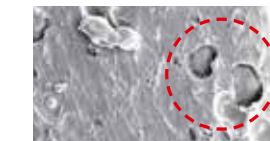
- > 1 mm
- Pressed under 800 tons
- 100 % PVC
- No transparent wearlayer

(1) Identical scale, enlarged 200 times

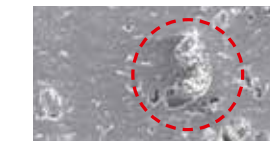
#### Other flooring<sup>(1)</sup>



**Printed flooring with transparent wearlayer**  
 Air bubbles: dirt traps



**Homogeneous flooring**  
 Fillers: fragile and subject to scratches



**Coated flooring**  
 Irregular density: dirt traps



**Rubber flooring**  
 Porous and elastic: lower wear resistance and difficult to maintain

### Wear test

	Other floorcovering	Gerflor Premium
<b>0 cycle / new product</b>		
<b>After 1000 cycles</b> equivalent to very heavy traffic use after 5 years		
<b>After 2000 cycles</b> equivalent to very heavy traffic use after 10 year		

# Nature, an infinite source of inspiration

The endless inspiration of Nature contrasts with the fragility of its resources. This is why our range is evolving towards a **more responsible composition**, without altering the unique qualities that define Premium.

Durable and elegant, our new collection reveals **resolutely natural shades**: the subtle freshness of eucalyptus, the deep warmth of ochre, the shimmering serenity of aqua, and the luminous neutrality of sand. This timeless color palette perfectly embodies the **iconic durability** of Premium.



## 8 designs



**Brazilia,**  
vibrant chromatics revisited granite

**NEW Neoterra,**  
terrazzo inspiration with a touch of light

**Metallica,**  
sophisticated, crystal-clear radiance

**Poesy,**  
softness and delicacy with metallic sheen

**Indiana,**  
vibrant, subtly contrasting faux smooth finish

**Osmoz,**  
timeless, nuanced & blended shades

**Neopolis,**  
rough and deep, to reveal an urban look

**NEW Cocoon,**  
serene palette enhancing the beauty of recycled fibers

# Premium in harmonie

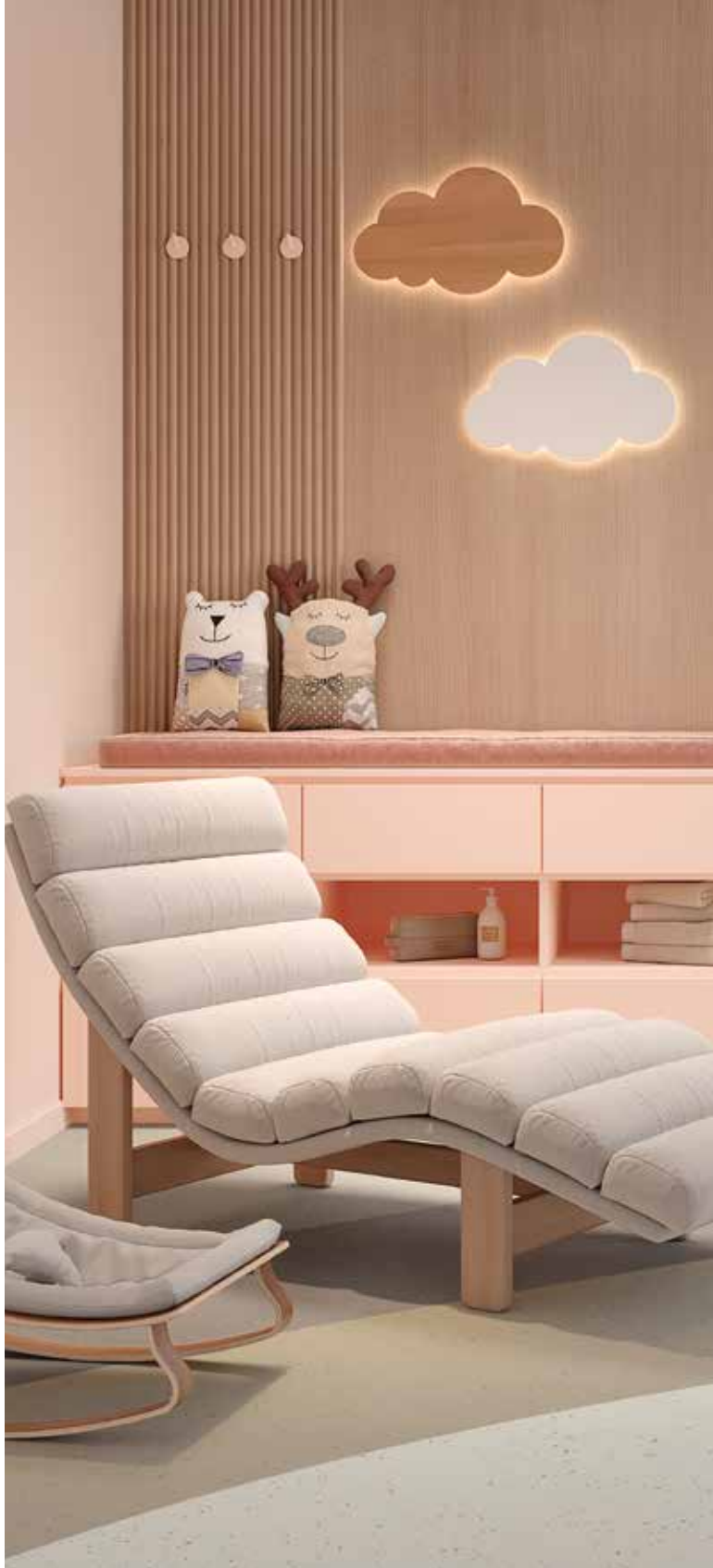
Floors, wall covering & wall protections





# Cocoon

Serene palette enhancing the beauty of recycled fibers



COCOON - 0032 Satin



COCOON - 0030 Crinolin



COCOON - 0027 Muslin



COCOON - 0028 Organza



COCOON - 0029 Flannel

# Poesy

Softness and delicacy with metallic sheen



POESY - 2747 Ballade



POESY - 2151 Sonate



POESY - 8621 Ode



POESY - 2750 Ellipse



POESY - 2152 Octave



POESY - 8627 Allegorie



POESY - 2751 Slam



POESY - 2748 Refrain



POESY - 2501 Rhapsody



POESY - 2752 Litote



POESY - 2749 Lyrique



POESY - 8626 Rime





# Neoterra

Terrazzo inspiration with a touch of light



NEOTERRA - 4207 Prato



NEOTERRA - 4206 Lazuli



NEOTERRA - 4205 Dorata

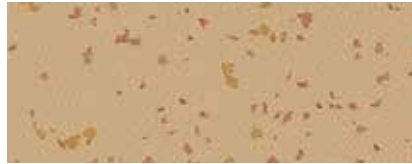


NEOTERRA - 4208 Soraya



# Indiana

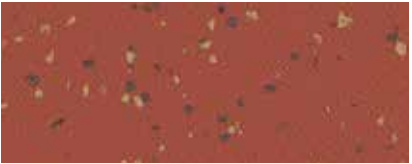
Vibrant, subtly contrasting faux smooth finish



INDIANA - 4052 Calero



INDIANA - 4001 Ofu



INDIANA - 4051 Maraca



INDIANA - 4343 Tokelau



INDIANA - 4009 Tufoa



INDIANA - 4050 Comores



INDIANA - 8150 Bali



INDIANA - 4002 Manua



INDIANA - 4049 Kilmia



INDIANA - 4053 Diwaran



INDIANA - 4047 Okuza



INDIANA - 4048 Malabo



INDIANA - 8226 Fidji



INDIANA - 4046 Cubagua



INDIANA - 4045 Dalupiri



INDIANA - 4003 Tao



INDIANA - 4476 Wattaru



INDIANA - 7517 Faroe

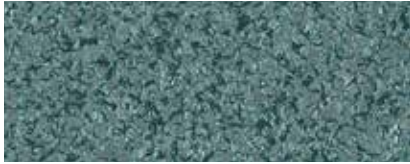


INDIANA - 8837 Songo



# Metallica

Sophisticated, crystal-clear radiance



METALLICA - 0062 Beyla



METALLICA - 9753 Energy



METALLICA - 0064 Sudri



METALLICA - 0061 Eldir



METALLICA - 9745 Cosmic



METALLICA - 8257 Nyx



METALLICA - 0060 Dellig



METALLICA - 0063 Narfi



METALLICA - 2746 Ymir



# Osmoz

Timeless, nuanced & blended shades



OSMOZ - 4378 Igloo



OSMOZ - 4349 Angora



OSMOZ - 4364 Ivory



OSMOZ - 4365 Alpaga



OSMOZ - 4379 Koudou



OSMOZ - 4384 Barbantine



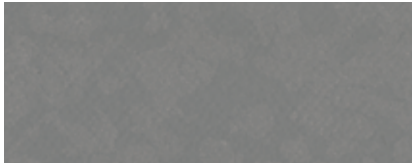
OSMOZ - 3792 Storm Grey



OSMOZ - 4380 Awara



OSMOZ - 4383 Jasmin



OSMOZ - 3791 Slate Grey



OSMOZ - 4381 Rozelle



Osmoz - 4382 Cyclades



OSMOZ - 7737 Pepper Grey



OSMOZ - 4351 Greige





# Brazilia

Vibrant chromatics revisited granite

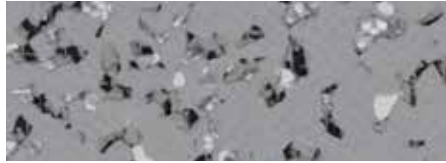


# Neopolis

Rough and deep, to reveal an urban look



**NEOPOLIS - 2741 Brooklyn**



**NEOPOLIS - 2740 Harlem Soft**



**NEOPOLIS - 2742 Times Square**



**NEOPOLIS - 2744 Queens Soft**



**NEOPOLIS - 2743 Central Park**



**NEOPOLIS - 2745 Plaza**



# Premium Collection

Design	Colour	Code	Acoustic	LRV	NCS		
Brazilia		Alvorada	0051	●	51,5	2010-Y30R	
		Aracaju	0058		15,6	4040-B	
		Barueri	0054		29,9	0560-Y90R	
		Boa Vista	8386	●	63,7	1002-Y50R	
		Ceara	3709		30,4	4005-R80B	
		Limeira	0053		62,2	0560-Y	
		Maceio	4477		35,7	2030-B10G	
		Natal	0056		33,2	3030-G20Y	
		Olinda	0052		37	1060-Y40R	
		Paraiba	3707		10,1	7005-R80B	
Cocoon		Recife	8736	●	54,8	2005-R80B	
		Teresina	0055		13,4	3050-R	
		Crinolin	0030		35,8	4005-Y50R	
		Flannel	0029		31,1	4005-R80B	
		Muslin	0027	●	46,7	2500-N	
		Organza	0028		60,1	2002-Y	
		Satin	0032	●	43,5	3005-Y50R	
	Indiana		Bali	8150		39,2	3005-Y50R
			Calero	4052	●	37,3	3020-Y20R
			Comores	4050		28,9	3030-Y60R
		Cubagua	4046		39,5	2030-B60G	
		Dalupiri	4045		49,7	2010-G60Y	
	Diwaran	4053	●	20,2	6010-Y10R		

Design	Colour	Code	Acoustic	LRV	NCS	
Indiana		Faroe	7517		20,4	6010-G30Y
		Fidji	8226	●	35,6	3502-Y
		Kilmia	4049		31,3	2060-Y30R
		Malabo	4048		46,8	2040-Y20R
		Manua	4002	●	63	1502-B
		Maraca	4051		14	4040-Y80R
		Ofu	4001	●	88,7	0502-Y
		Okuza	4047	●	55,3	1515-R90B
		Songo	8837		7,3	8000-N
		Tao	4003		27,5	4502-B
Metallica		Tokelau	4343	●	46,7	2005-Y50R
		Tufoa	4009	●	66,3	1005-Y20R
		Wattaru	4476		12,4	5030-R90B
		Beyla	0062		21,3	5010-B90G
		Cosmic	9745		28,4	5502-B
		Dellig	0060		9	8010-R90B
		Eldir	0061		22	4020-B
		Energy	9753	●	56,3	2502-G
		Narfi	0063		21,2	6010-Y10R
		Nyx	8257		28	4030-Y20R
	Sudri	0064	●	51,2	2005-Y20R	
	Ymir	2746		23,9	5030-Y50R	

Design	Colour	Code	Acoustic	LRV	NCS		
Neopolis		Brooklyn	2741		14,9	7502-B	
		Central Park	2743	●	52,3	2005-Y30R	
		Harlem Soft	2740		30	4500-N	
		Plaza	2745		53,8	2002-B	
		Queens Soft	2744		29,4	4005-Y50R	
		Times Square	2742		14,9	7005-Y50R	
	Neoterra		Dorata	4205	●	73,8	0502-Y
			Lazuli	4206	●	77,3	0502-Y
			Prato	4207		76,4	0502-Y
			Soraya	4208		77	0502-Y
		Alpaga	4365	●	52,2	2002-Y	
Osmoz		Angora	4349	●	42,2	3005-Y50R	
		Awara	4380		27,8	3020-Y60R	
		Barbadine	4384		51,1	2040-Y10R	
		Cyclades	4382	●	20,2	4030-B	
		Greige	4351		25,8	5005-Y50R	
		Igloo	4378		60	1502-B	
		Ivory	4364	●	61,1	1502-Y	
		Jasmin	4383		38,5	3020-G20Y	
		Koudou	4379		34,6	3010-Y30R	
		Pepper Grey	7737		9,4	8000-N	
	Rozelle	4381		17,1	4040-Y90R		
	Slate Grey	3791	●	21,7	5500-N		
	Storm Grey	3792		36,3	3502-B		

Design	Colour	Code	Acoustic	LRV	NCS	
Poesy		Allegorie	8627		24,8	3030-B10G
		Ballade	2747	●	43,8	2005-Y50R
		Ellipse	2750	●	45,1	2502-B
		Litote	2752	●	15	6502-B
		Lyrique	2749	●	16,6	6005-Y20R
		Octave	2152	●	30,8	3020-Y80R
		Ode	8621	●	50	1515-B50G
		Refrain	2748		28,8	4005-Y50R
		Rhapsody	2501	●	18,5	6010-B90G
		Rime	8626	●	20,3	5020-B
	Slam	2751		30,7	4500-N	
	Sonate	2151		32,9	3030-Y50R	

● Available as acoustic  
All colours are available as compact



# Gerflor products help you to age well

These days, ageing well is a social challenge. In this context, supporting people who have dementia is the focus of numerous discussions.

**What is dementia?** Dementia is a syndrome that occurs in numerous neurological diseases (one of the most well-known being Alzheimer's disease), caused by progressive degeneration of certain neurons. These pathologies affect the memory, thoughts, behaviour and the ability to perform daily activities.

Gerflor is committed to helping towards ageing comfortably by developing designs and colours to suit these medical conditions.

Below are some key points for choosing a suitable flooring



### Contrasting colours

Sections of the same area (floors, walls, accessories) must be in contrasting colours in order to improve the three-dimensional perception of the different spaces and thus encourage movement. It is also important to take into account the light reflectance value (LRV\*) of the different sections.

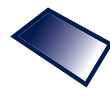
> **All the LRVs in Gerflor ranges are available on our website and our communication tools.**



### 'Soft' and almost plain patterns

Heavily patterned flooring or flooring with busy patterns should be avoided, as well as the colour black, which could lead to blocking reactions due to visual barriers. We therefore recommend choosing soft patterns.

> **Many designs and colours in Gerflor's ranges have semi-plain or almost plain patterns that are perfectly suitable.**



### Matt flooring

In addition to the more realistic look, matt flooring is perceived as more secure. In fact, shiny floors can look wet, making people with dementia hesitant and increase the risk of falling.

> **The latest-generation surface treatments developed by Gerflor (Protecsol® 2, Evercare™ in particular) give the products a matt appearance.**



### Acoustic comfort

You should opt for acoustic products that will reduce ambient noise and create a more calm and peaceful environment.

> **Many of the Gerflor collections provide sound insulation. For example, Premium offers sound insulation up to 17 dB (acoustic sheet) and 8 dB (compact sheet).**



### Accredited Solutions

Gerflor sought to validate and accredit its solutions (notably Taralay Premium) through the DSDC, the **Dementia Services Development Centre**. This organization is an independent and internationally recognized center of knowledge and expertise, dedicated to improving the lives of people with dementia.

Desing	Colour	Code	DSDC
	Alvorada	0051	1b
	Aracaju	0058	1b
	Barueri	0054	1b
	Boa Vista	8386	2
	Ceara	3709	2
Brazilia	Limeira	0053	1b
	Maceio	4477	2
	Natal	0056	1b
	Olinda	0052	1b
	Paraiba	3707	2
	Recife	8736	2
	Teresina	0055	1b
	Crinolin	0030	2
	Flannel	0029	2
Cocoon	Muslin	0027	2
	Organza	0028	2
	Satin	0032	2
	Bali	8150	2
	Calero	4052	2
	Comores	4050	2
	Cubagua	4046	2
	Dalupiri	4045	2
	Diwaran	4053	2
	Faroe	7517	2
Indiana	Fidji	8226	2
	Kilmia	4049	2
	Malabo	4048	2
	Manua	4002	2
	Maraca	4051	2
	Ofu	4001	2
	Okuza	4047	2

Desing	Colour	Code	DSDC
	Tao	4003	2
Indiana	Tokelau	4343	2
	Tufoa	4009	2
	Wattaru	4476	2
	Alpaga	4365	1b
	Angora	4349	2
	Awara	4380	2
	Barbadine	4384	2
	Cyclades	4382	2
	Greige	4351	2
Osmoz	Igloo	4378	1b
	Ivory	4364	2
	Jasmin	4383	2
	Koudou	4379	2
	Pepper Grey	7737	2
	Rozelle	4381	2
	Slate Grey	3791	2
	Storm Grey	3792	1b



The DSDC Accredited product logo is awarded on the merit of the individual product and colourway. This accreditation does not merit the final application. Whilst every endeavor has been made to ensure the ratings are reflective of the product's suitability and applied use at the time of print, DSDC cannot be held responsible for the application of the final product, its performance or its interface with other products or finishes.

\*LRV: Light Reflectance Value



# 8 designs



**Brazilia,**  
Vibrant chromatics revisited granite

**NEW Neoterra,**  
terrazzo inspiration with a touch of light

**Metallica,**  
sophisticated, crystal-clear radiance

**Poesy,**  
softness and delicacy with metallic sheen

**Indiana,**  
vibrant, subtly contrasting faux smooth finish

**Osmoz,**  
timeless, nuanced & blended shades

**Neopolis,**  
rough and deep, to reveal an urban look

**NEW Cocoon,**  
serene palette enhancing the beauty of recycled fibers

# Premium in harmony

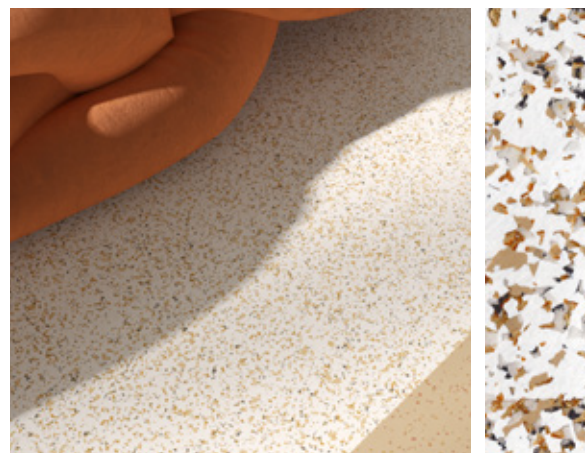
Floors, walls & wall protections



# 2 new designs

## Neoterra

The timeless terrazzo that blends minerality and lightness, with primary colours for endless combinations



## Cocoon

Serene range with recycled fibres for calm and natural look







POESY - 2749 Lyrique / METALLICA - 8257 Nyx

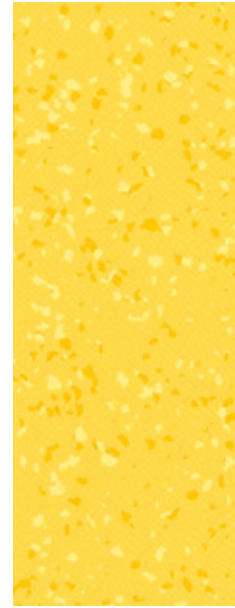


OSMOZ - 4379 Koudou / 4364 Ivory





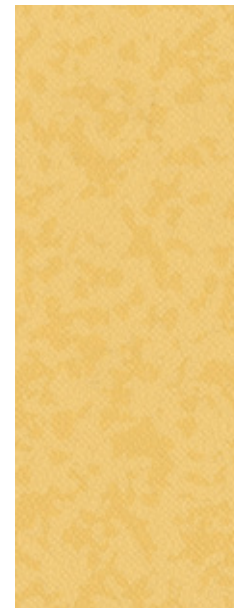
# Premium



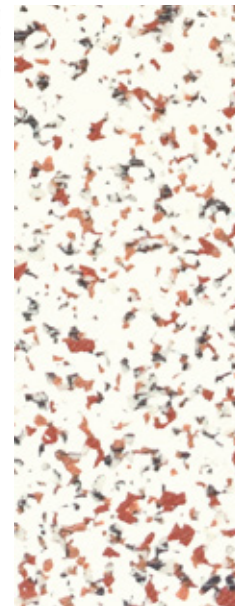
**BRAZILIA** - 0053 Limeira



**INDIANA** - 4048 Malabo



**OSMOZ** - 4384 Barbadine



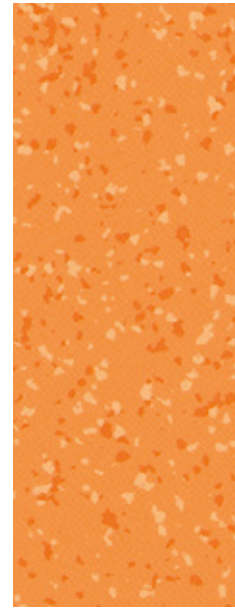
**NEOTERRA** - 4208 Soraya



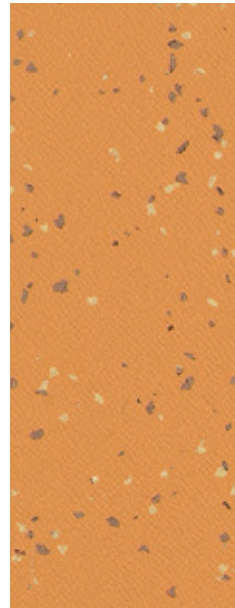
**POESY** - 2151 Sonate



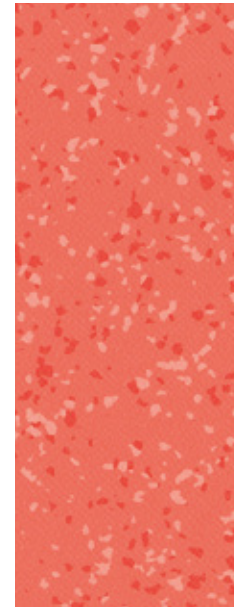
**NEOTERRA** - 4205 Dorata



**BRAZILIA** - 0052 Olinda



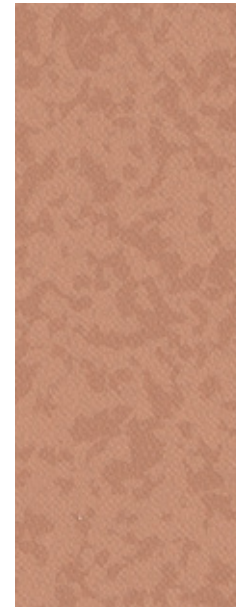
**INDIANA** - 4049 Kilmia



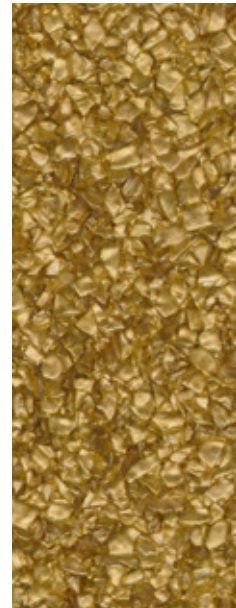
**BRAZILIA** - 0054 Barueri



**POESY** - 2152 Octave



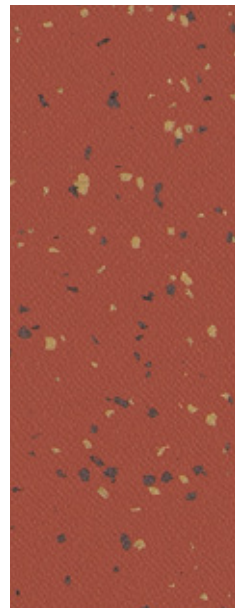
**OSMOZ** - 4380 Awara



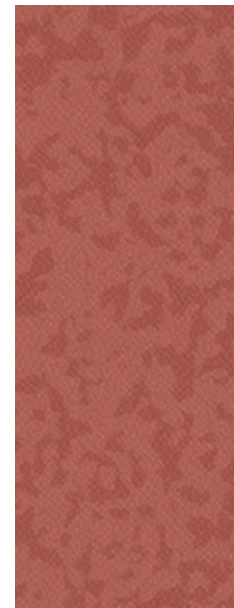
**METALLICA** - 8257 Nyx



**BRAZILIA** - 0055 Teresina



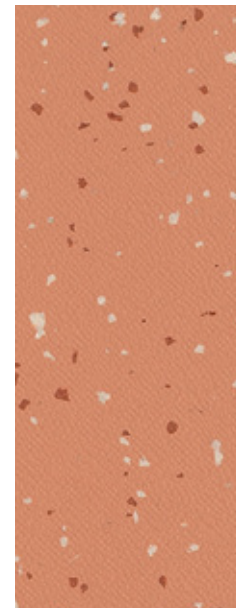
**INDIANA** - 4051 Maraca



**OSMOZ** - 4381 Rozelle



**METALLICA** - 2746 Ymir



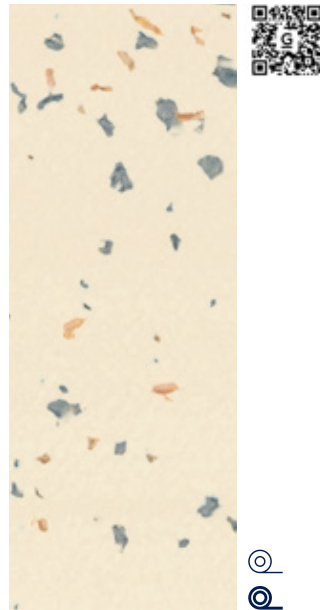
**INDIANA** - 4050 Comores



**INDIANA** - 4052 Calero



# Premium



**INDIANA** - 4009 Tufoa



**BRAZILIA** - 0051 Alvorada



**METALLICA** - 0064 Sudri



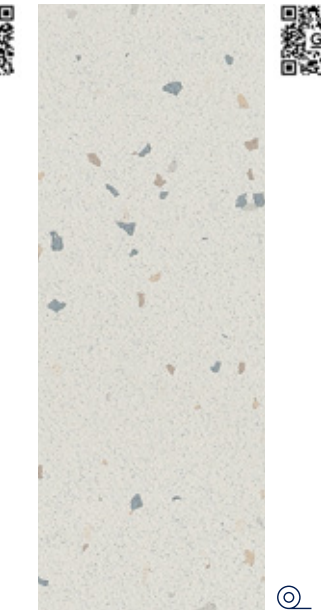
**INDIANA** - 4343 Tokelau



**NEOPOLIS** - 2743 Central Park



**BRAZILIA** - 8386 Boa Vista



**COCOON** - 0028 Organza



**OSMOZ** - 4379 Koudou



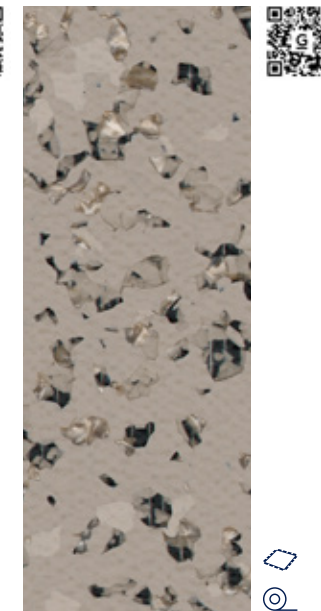
**COCOON** - 0032 Satin



**POESY** - 2747 Ballade



**COCOON** - 0030 Crinolin



**NEOPOLIS** - 2744 Queens Soft



**INDIANA** - 8150 Bali



**OSMOZ** - 4349 Angora



**METALLICA** - 0063 Narfi



**INDIANA** - 4053 Diwaran



**POESY** - 2749 Lyrique



**POESY** - 2748 Refrain



**NEOPOLIS** - 2742 Times Square



**OSMOZ** - 4351 Greige



**OSMOZ** - 3791 Slate Grey



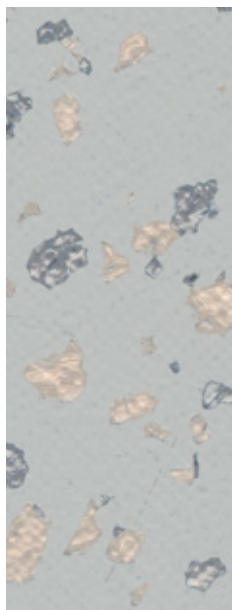
# Premium



OSMOZ - 4365 Alpaga



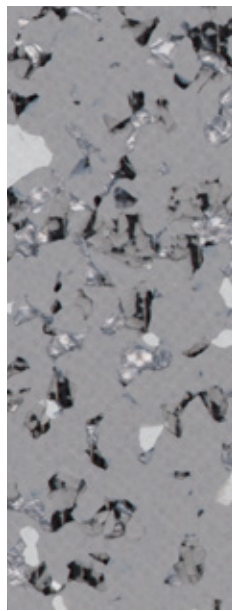
METALLICA - 9753 Energy



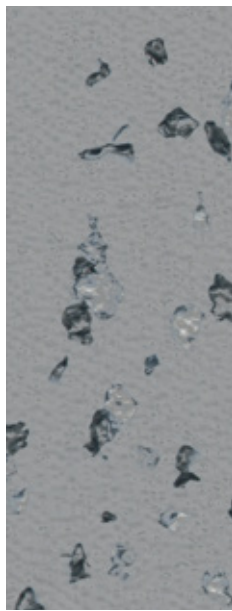
POESY - 2750 Ellipse



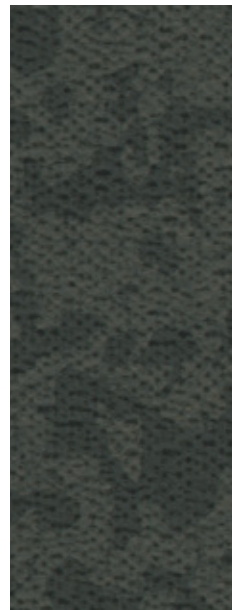
INDIANA - 8226 Fidji



NEOPOLIS - 2740 Harlem Soft



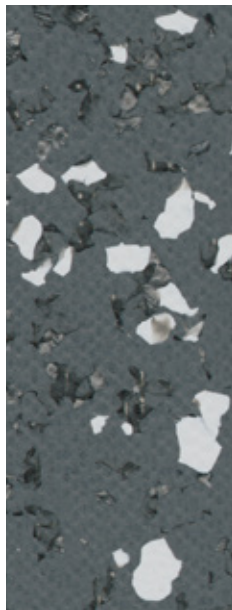
POESY - 2751 Slam



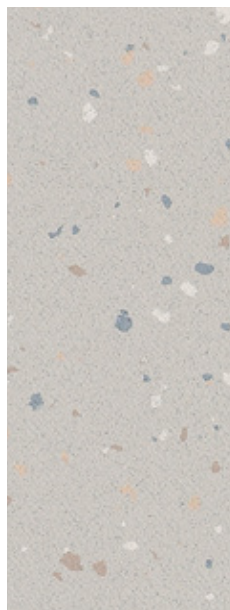
OSMOZ - 7737 Pepper Grey



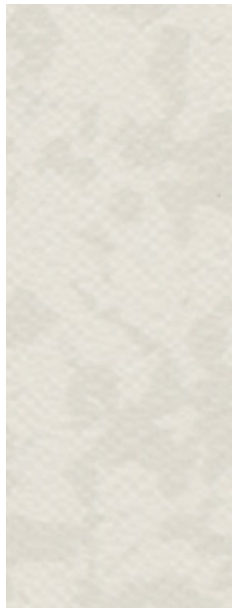
BRAZILIA - 3707 Paraiba



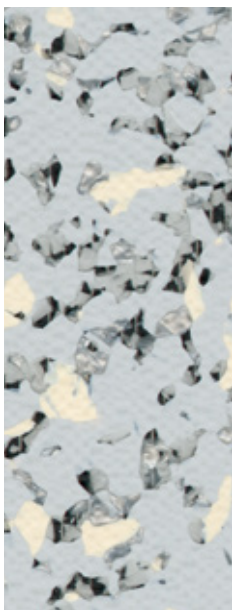
NEOPOLIS - 2741 Brooklyn



COCOON - 0027 Muslin



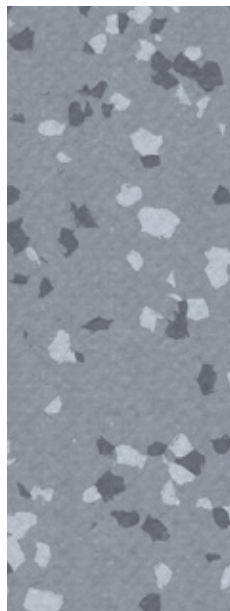
OSMOZ - 4364 Ivory



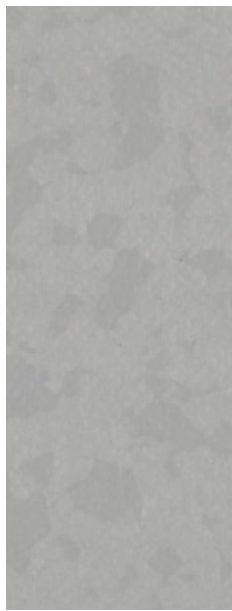
NEOPOLIS - 2745 Plaza



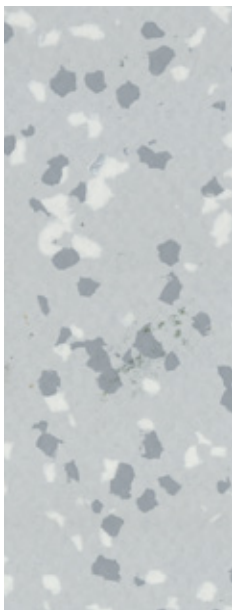
OSMOZ - 4378 Igloo



BRAZILIA - 3709 Ceara



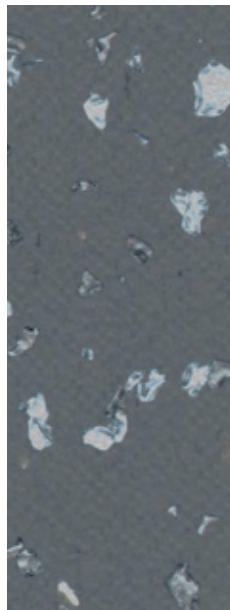
OSMOZ - 3792 Storm Grey



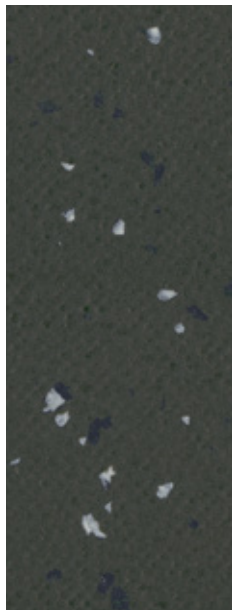
BRAZILIA - 8736 Recife



METALLICA - 9745 Cosmic



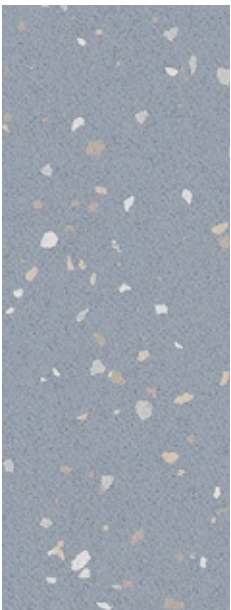
POESY - 2752 Litote



INDIANA - 8837 Songo



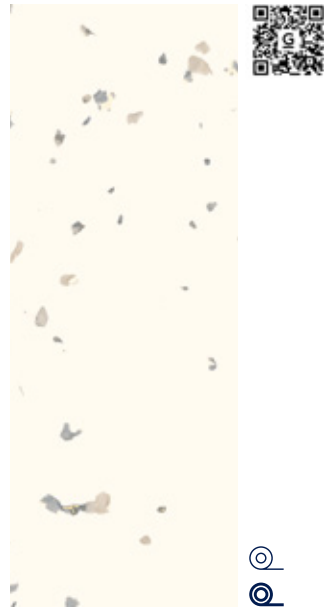
INDIANA - 4003 Tao



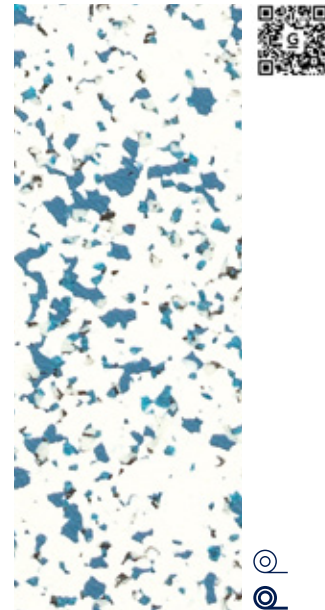
COCOON - 0029 Flannel



# Premium



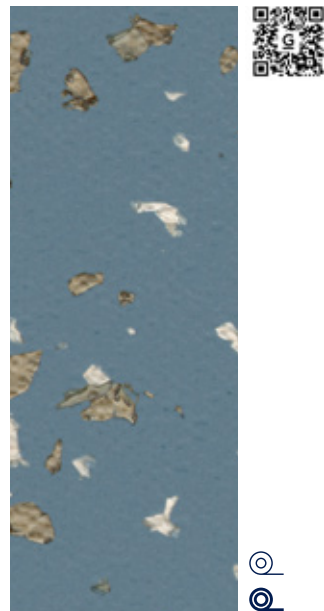
INDIANA - 4001 Ofu



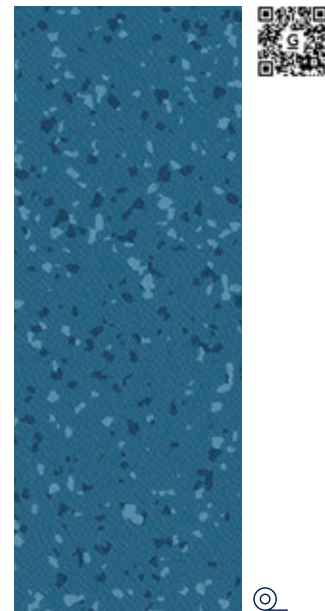
NEOTERRA - 4206 Lazuli



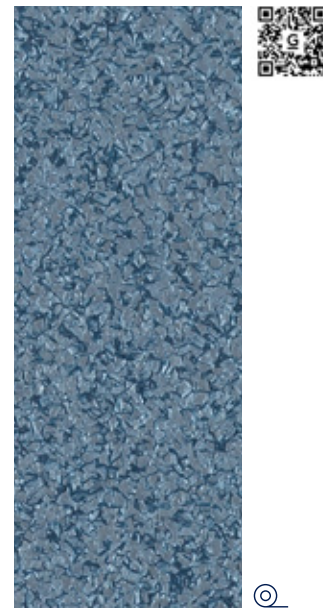
INDIANA - 4047 Okuza



POESY - 8626 Rime



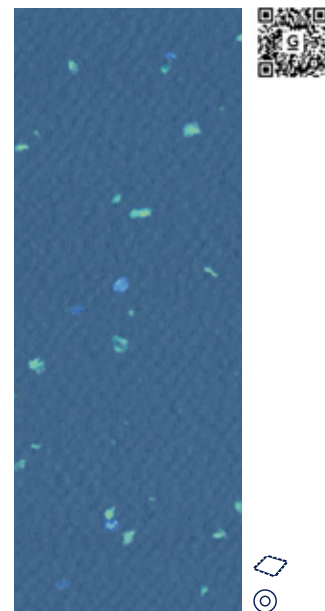
BRAZILIA - 0058 Aracaju



METALLICA - 0061 Eldir



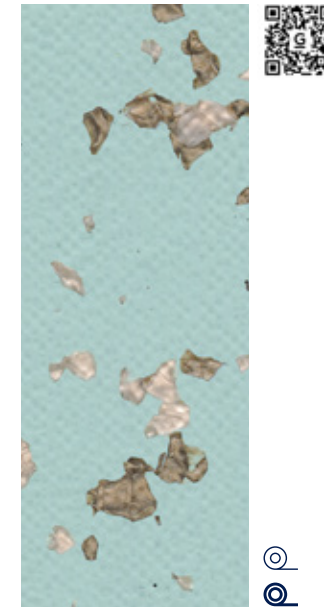
METALLICA - 0060 Dellig



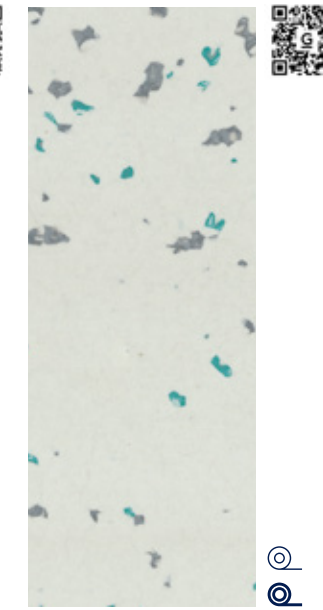
INDIANA - 4476 Wattaru



Osmoz - 4382 Cyclades



POESY - 8621 Ode



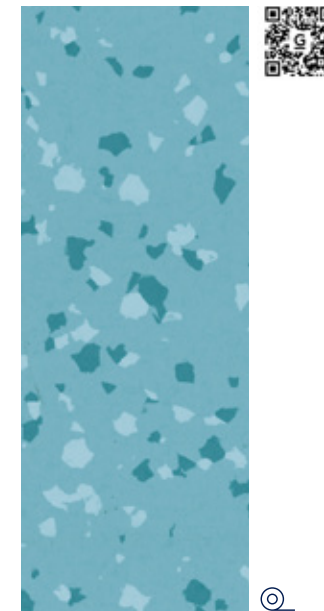
INDIANA - 4002 Manua



INDIANA - 4045 Dalupiri



NEOTERRA - 4207 Prato



BRAZILIA - 4477 Maceio



INDIANA - 4046 Cubagua



OSMOZ - 4383 Jasmin



BRAZILIA - 0056 Natal



POESY - 8627 Allegorie



METALLICA - 0062 Beyla



POESY - 2501 Rhapsody



INDIANA - 7517 Faroe





	PREMIUM COMPACT		PREMIUM ACOUSTIC	
	Brazilia / Indiana / Cocoon / Neopolis / Osmoz / Poesy / Neoterra - Metallica		Brazilia / Indiana / Cocoon / Neopolis / Osmoz / Poesy / Neoterra - Metallica	
<b>Description</b>				
Total thickness	EN ISO 24346	mm	2.00	3.00-3.30
	ASTM F386-02	inch	0.08	0.12 - 0.13
Wearlayer thickness	EN ISO 24340	mm	≥ 1.02	≥ 1.02
	ASTM F410-02	inch	≥ 0.039	≥ 0.039
Weight	EN ISO 23997	g/sq.m	2580 - 2620	≥ 2800
	-	lbs/sq.ft	0.53 - 0.57	0.58
Width / Length of sheet	EN ISO 24341	cm / lm	200 / 20	200 / 25
	-	feet - inch	6'6" / 66'	6'6" / 82'
Tile size	EN ISO 24342	mm	-	-
<b>Classification</b>				
Norm / Product specification	-	-	EN ISO 10582	EN ISO 11638 (EN 651)
European classification	EN ISO 10874	class	34 -43	34 -42
Fire rating	EN 13 501-1	class	Bfl-s1	Cfl-s1
Static electrical propensity	EN 1815	kV	< 2	< 2
Slip resistance	EN 16165:2021 – Appendix B (DIN 51 130)	class	R10	R10
<b>Performance</b>				
Wear resistance	EN 660.2	mm <sup>3</sup>	≤ 2.0	< 2.0
Wear group	NF 189	group	T	T
Type binder content	EN ISO 10582	type	I	-
Dimensional stability	EN ISO 23999	%	≤ 0.40	≤ 0.40
Residual indentation (requirement)	EN ISO 24343-1	mm	≤ 0.10	≤ 0.20
Residual indentation (measure)	-	mm	≈ 0.02	≈ 0.06
Impact sound insulation	EN ISO 717-2	dB	8	17 (Metallica : 16)
Castor chair test (type H)	ISO 4918	-	OK	OK
Thermal conductivity	EN ISO 10456	W/(m.k)	0.25	0.25
Colour fastness	EN 20 105 - B02	degree	≥ 6	≥ 6
Surface treatment	-	-	Evercare™	Evercare™
Chemical products resistance <sup>(1)</sup>	EN ISO 26987	-	OK <sup>(1)</sup>	OK <sup>(1)</sup>
Anti-bacterial activity (E. coli - S. aureus - MRSA) <sup>(2)</sup>	ISO 22196	-	> 99 % inhibits growth	> 99 % inhibits growth
Antiviral activity (Human coronavirus) after 2h <sup>(2)</sup>	ISO 21702	-	> 99,7% virucidal activity	> 99,7% virucidal activity
<b>Environment / Indoor Air Quality</b>				
TVOC after 28 days	ISO 16000-6	microgram/m <sup>3</sup>	<10	< 10
Certification	-	-	Floorscore®	Floorscore®
<b>CE Marking</b>				



EN 14041



(1) Regarding the resistance to chemicals, please download the corresponding leaflet from our website.  
 (2) The implementation of an effective cleaning regime is the most important defence against infection.

Installation and Maintenance Guidelines, Complementary ranges available on our Gerflor website.

**!** Rubber leaves indelible stains on vinyl floorings: do not use mats with rubber backing and replace tubular furniture feet with those made of PVC or polyamide. Place mats of sufficient length at entrances to reduce outside sources of dirt.

**IMPORTANT:** The information contained in this document is valid from 01/09/2024 and is subject to change at any time without notice. In the context of constantly changing technology, our customers are responsible, prior to any use, for checking with us that this document is the version in force.

## We care / We act Our Commitments for a Sustainable future

**CARBON FOOTPRINT\***  
 -20 % kg  
 CO<sub>2</sub> equivalent/m<sup>2</sup>  
 between 2020 and 2025

**BIOSOURCED CONTENT\*\***  
 10 % by 2025

**RECYCLED CONTENT**  
 30 % by 2025

**ADHESIVE FREE\*\*\***  
 35 % by 2025

**ANNUAL VOLUME RECYCLED**  
 60 000 t by 2025



\* Scopes 1 and 2 defined in the GHG protocol \*\* % of activity with biosourced materials \*\*\* % of activity - adhesive free solution